



Sheet Metal Fabricating and Assembly



High Technology Manufacturing

Equipped To Help You Compete

CGI Automated Manufacturing has the experience and the technology to truly become your partner in manufacturing.

- ✓ In-House CAD/CAM Design
- ✓ Product Prototyping
- ✓ Computerized Job Costing
- ✓ Material Utilization Analysis
- ✓ Bar Coded Shop Floor Routing
- ✓ 24/7 Production Capability
- ✓ Fast Turnaround
- ✓ Knowledgeable Sales Staff
- ✓ Proven Performance
- ✓ Award-Winning Customer Service

Our computerized manufacturing organizes, schedules, and tracks your job from start to finish. We will automatically program production directly from your CAD files for the ultimate assurance of accuracy in processing. With our high level of automation, including lights out production and 24/7 manufacturing, your parts can be ready in hours and days, not weeks or months.

“Ask for a competitive evaluation, it can save you money.”

Let CGI provide a no-obligation cost analysis on your current or planned part production. Using sophisticated planning and production control software, we may be able to shave both dollars and days from your current method. There's nothing to lose, everything to gain!





Advanced Sheet Metal Production 24/7



Established in 1976, CGI can fabricate metal components in most types of material, and assist in subassembly production, from the simple to the complex. Widely known as one of the most technologically advanced contract manufacturers in the Midwest, CGI implements fully automated material management and production. We manage your entire production from quoting through timely delivery of your finished product. We can also network to your system to become a truly integrated extension of your manufacturing operation.

Market Experience

- Pharmaceutical
- Electronic Components
- Telecommunications
- Railcar Components
- Lighting
- Store Fixtures
- Mounting Equipment

Processes

- Shearing
- Sawing
- Laser Cutting
- CNC Punching
- Forming
- Robotic Welding
- MIG & TIG Welding
- Spot Welding
- Fastener Insertion
- Powder Coating
- Plating
- Assembly
- Kitting



Quality

CGI has been the proud recipient of many quality and customer service awards. Our proven systems will meet your quality and turnaround needs as well.

Member IMA • Member TMA • Member FMA • Member BBB



Networkable Automation

The highly advanced automation allowed by combining Mitsubishi Laser components with Ncell automation software provides the lowest part costs with the highest throughput. Ncell eliminates unnecessary steps in the workflow process, improves material utilization and reduces cost by eliminating direct labor from production.

Automation To Simplify Your Process

- Remove non value-added processes
- Less material handling, better accuracy and reliability
- Rapidly respond to real time production changes

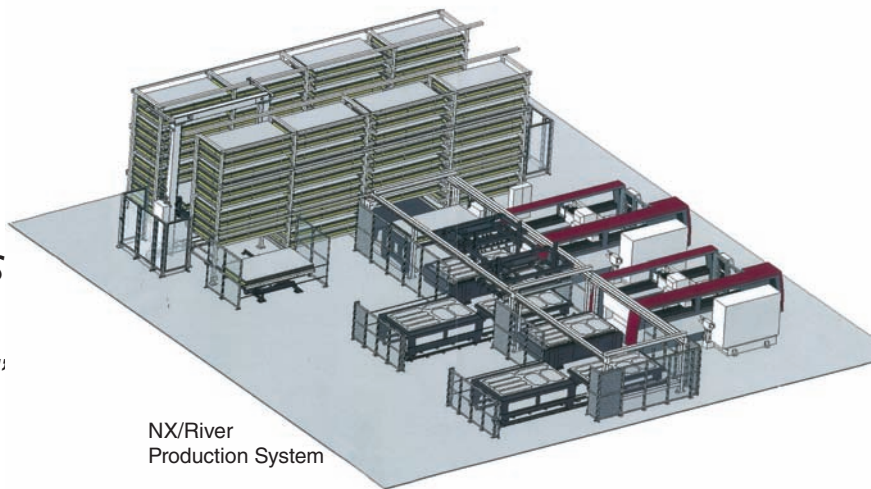
Automation To Win In Competitive Markets

- Win work from less efficient competition
- Expand into new markets
- Adjust quickly and easily to changing market conditions



92 Shelf Integrated Production Staging System

“Combining Mitsubishi NX Laser Technology with River Navigation and Ncell production software brings a new era to fabrication efficiency and cost control.”



NX/River Production System

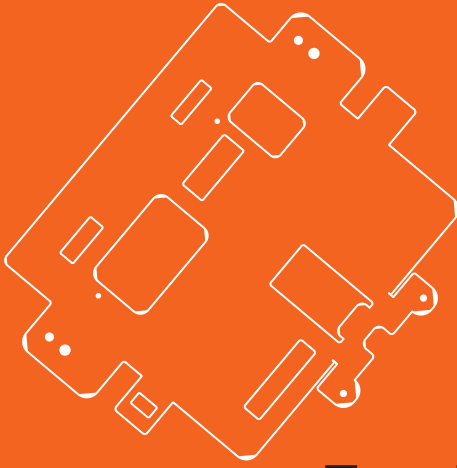
Lights Out—24/7 Production



Mitsubishi NX Laser

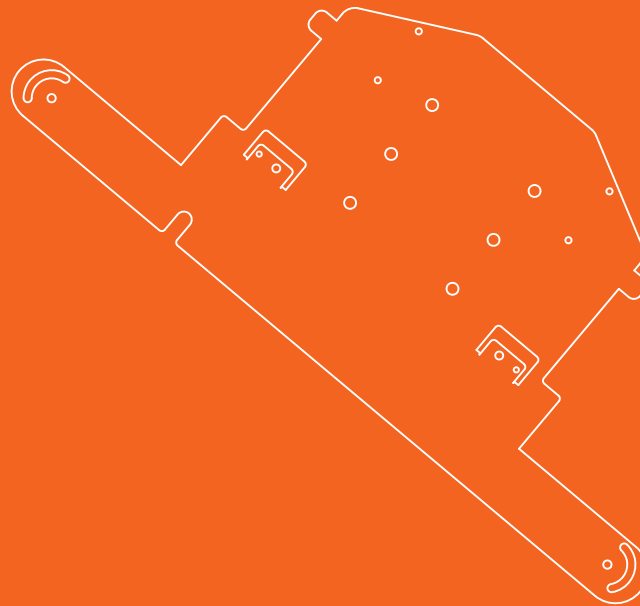
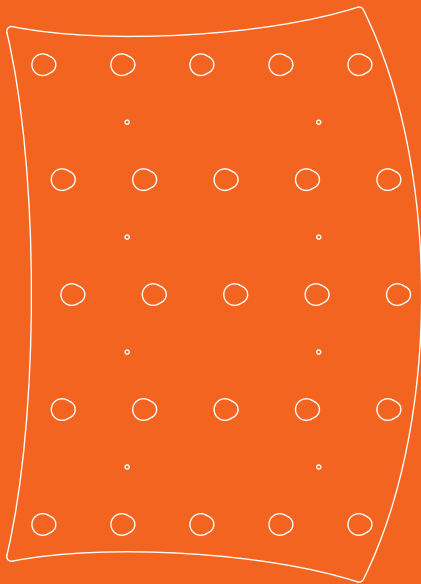
CGI automation brings next generation production technology to you today. Our shop floor features a versatile 8 Tower, 92 shelf material storage system. Dual lasers are efficiently controlled by a proven, world class, Mitsubishi River Navigation System. Cost cutting starts here and, for you, it can start today. Give us a call.

Ncell Software



Equipment Capacities

	Bed Size	Carbon	Stainless	Aluminum
Laser Cutting	60x120"	1" (1.0)	5/8" (.625)	3/8" (.375)
CNC Turret (30T)	50x120"	10 ga. (.1345)	10 ga. (.1345)	10 ga. (.1345)
CNC Turret (50T)	60x144"	3/8" (.375)	1/4" (.25)	1/4" (.25)
Shear	12'	1/4" (.25)	7 ga. (.1795)	1/4" (.25)
Forming (35-230T)	12'	1/4" (.25)	1/4" (.25)	1/4" (.25)
Rolling	3/16x72"	3/16" (.1875)	10 ga. (.1345)	1/4" (.25)
Robotic Welding	48x72x24"	Unlimited	Unlimited	Unlimited



275 Innovation Drive, Romeoville, IL 60446
 Ph: 815.221.5300 ■ Tf: 888.746.0275 ■ Fx: 815.221.5301
www.cgimfg.com

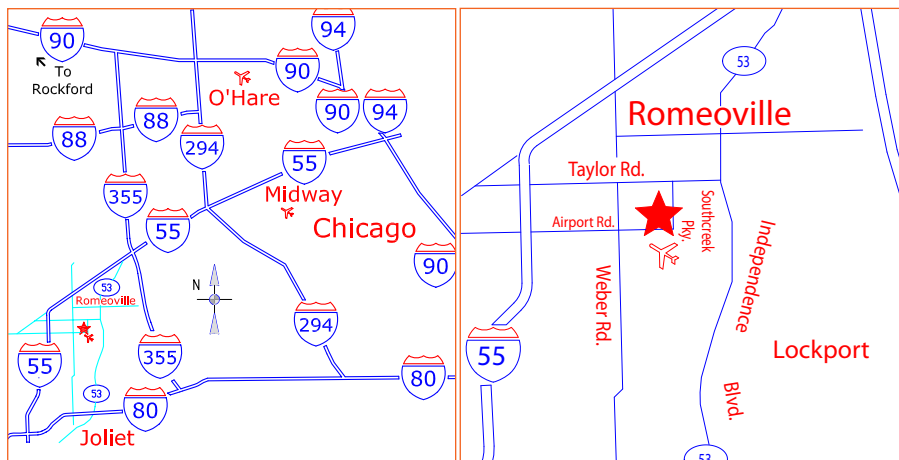
Convenient Location

The 62,500 sq. ft. CGI manufacturing facility is located about 25 miles southwest of Chicago in a rapidly growing industrial area convenient to 5 Interstate Highways and three airports. Proximity to Chicago means transportation convenience and fast, cost-efficient supply lines for materials and services. Eight loading bays provide fast, easy access for trucks and two 5-ton overhead cranes provide efficient material movement.



A Tradition of Technology Leadership

CGI is the first U.S. company to combine the Mitsubishi River Navigation System with two Mitsubishi NX Laser machines. CGI was second in the nation to combine the Mitsubishi River Navigation System with two lasers, and third in the nation to implement the River Navigation System. The benefit of this technology leadership? We provide you with optimum cost control and accuracy.



275 Innovation Drive, Romeoville, IL 60446
Ph: 815.221.5300 / Tf: 888.746.0275 / Fx: 815.221.5301
www.cgimfg.com

Quality